

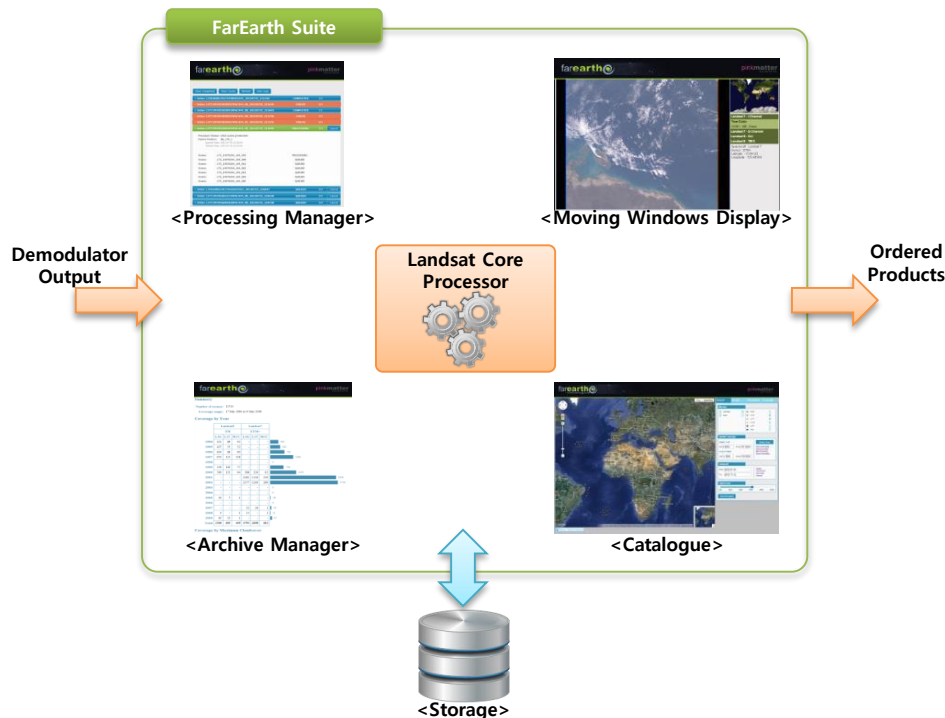
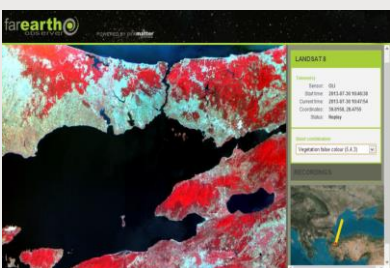
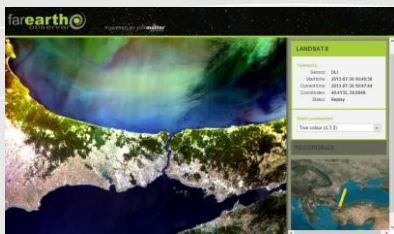
FarEarth

Landsat processing system



Highlight

FarEarth Landsat Terminal is a fully automated production system for Landsat imagery. Software components for acquisition QA, image processing, archiving and cataloguing are packed together into an easy to use software suite..



Landsat Core Processor

Landsat processor is a commercially supported Level 1 product generation system for Landsat satellite imagery. The output products of this system have been radiometrically and geometrically validated by the USGS. The following sensors are supported:

- Landsat 4 and 5 TM and MSS
- Landsat 7 ETM+
- Landsat 8 TIRS and OLI

The processor supports the flowing products:

- Various projections and resampling algorithms
- Orthorectification with automatic fallback
- Pan-sharpening of Landsat 7 & 8 imagery

SOLETOP

305-348, 2nd Floor, 59-5, Hwaam-dong, Yuseong-gu, Daejeon, Korea
 T. 042 867 7440
 F. 042 867 7445
contact@soletop.com
www.soletop.com



FarEarth

Landsat processing system

Moving Display System

The FarEarth Observer is a moving window system that provides real-time monitoring and visualization of received satellite passes.

An interface to the demodulator streams quicklook data to a web server as it is received. Clients can connect from anywhere to view live and recorded passes. The interface shows quality scores and renders the downlinked data in a number of different band combinations.

